



Independent Presbyterian Church Foundation

Birmingham, Alabama

2017 ANNUAL REPORT



Our Mission

The Independent Presbyterian Church Foundation is a public charity established by the IPC congregation. It encourages and receives contributions, invests funds and seeks innovative and responsive ways in which its assets may serve Christ's church, the community and the world.

April 6, 2018

Dear IPC Church Members and Friends:

Isn't it amazing how children continue to teach even the most seasoned amongst us what's important in life? I was attending our weekly staff meeting a few months ago, and our Director of Children's Ministry, Cindy Coulter, told us about a curious child asking about fish banks at the church. Cindy explained money was being collected to help people in need of homes, medications and other basic needs. Soon thereafter Caroline Hill, her brother and two cousins took it upon themselves to begin "raising money for the poor" with a lemonade stand. I couldn't help but think about how this relates to our Foundation because it's the core of what we are doing.

Whether it's becoming a Henry M. Edmonds Society member, giving to one of the many funds available in the Foundation, or starting your own fund, you can be assured that the money is being used to help the needy. The IPC Foundation distributed over \$2.3 million to help feed the hungry, provide assistance to orphans and vulnerable women in the South Sudan, prevent drug abuse amongst our young, break the systemic bonds of poverty through quality education otherwise not available to the less fortunate, provide chaplain support to the aging, and much more. For a first hand perspective, please read the stories shared by several of our grant recipients starting on page 1.

Keeping our members informed about the wonderful work being done by our many partners is important to us, and we hosted over 10 different lunch and learns throughout 2017.



TO GLORIFY GOD

...In Service

We heard from missionaries working in countries such as Mexico, South Sudan, and Brazil. We also heard from organizations here in Birmingham, including The Foundation Early Learning Center and The Birmingham Education Foundation. We will continue to host these lunch and learns throughout 2018, so please let us know if you have a particular missionary or organization you'd like to hear from.

The Foundation was also named "Outstanding Organization" by the Association of Fundraising Professionals. The award honors IPC's leadership and love for giving. See a picture of it on page 12.

I invite you now to turn the page and begin reading about how the IPC Foundation served lemonade to those in need throughout the world this past year.

Denise W Moore
Executive Director

Inside

FOCUS ON GRANTS:

Make Way Partners	1
Addiction Prevention Coalition	3
Breakthrough Birmingham	3
Friends of Forman Christian College	5
Kirkwood by the River	6
Muhabura Dorm	7
Spring Valley School	8
Theological Education Project	9
The Unitized Funds:	
Music & Fine Arts	10

PRESIDENT'S REPORT..... 11

FOUNDATION OVERVIEW:

A History of Major Giving.....	13
The Henry M. Edmonds Society.....	15

FUNDS OVERVIEW:

The Orlean and Ralph W. Beeson Fund.....	15
The Unitized Funds.....	16
The Life Income Fund.....	17
Funds Administered for Others.....	18
The Administrative Fund.....	18
Investment Performance and Fees.....	18
The Power of Endowments..	18
Independent Auditor Report	18

APPENDIX A:

2017 IPCF Grant Awards.....	19
-----------------------------	----

APPENDIX B:

Financial Information.....	20
----------------------------	----



... Evangelism in the midst of trauma...

- **Make Way Partners** has multiple ministries in Sudan with the goal of fighting human trafficking
- 2017 IPC Foundation grant built a surgical ward with an attached recovery room and an additional six-bed ward
- A mobile clinic provides healthcare for an orphan home while a permanent hospital constructed
- Area currently in the midst of a civil war
- Orphanage sustained damage from bombs in 2016

Focus on Grants

Each year, the IPC Foundation awards IPCF grants for “the benefit of mankind, the education of youth, the relief of human suffering, and propagation of the Christian religion.” The Foundation also makes distributions from the Unitized Funds. Highlighted below are several stories told by grant recipients to deepen our understanding of the impact these grants have on the world and its people. A description of the grant making process can be found in the Funds Overview section beginning on page 15.

Make Way Partners

After hearing hundreds of stories of innocence lost, genocidal deaths, brutal deprivation of humanitarian aid, mass rape, and Christian persecution, I thought not much would shock me. I was wrong.

Yet another open-air truckload of former slaves and refugees made their way back down to Nyamlel, the base of our first school and orphanage on the border of Darfur. My heart sank as I saw battered old women and young, once beautiful, girls climb down from their perch high atop 50 kg bags of grain and sugar.

A guard sits atop with the women to ensure that they do not rip into the bags for a few morsels of life saving nutrients. Many do not survive the journey; their fight for freedom is rewarded with one final indignation: the guards roll their bodies from the truck to drop on the desert floor.

The local chief stood in the midst of the bedraggled women. He yelled for James and me to come near. The chief shouted, “I have too many women to care for; and this one, she is like a noose around my neck.”

That is when I noticed the small figure next to him. Her face was thickly scarred from long, deep incisions; she was almost bald. Asunta’s eyes were like the eyes of a dead fish, no life, no expression – dead.

She came with James and me to our orphanage. I never heard her speak or interact with any of the other women. One day, I asked Asunta if we could have tea.

She told me of the day her village was raided and her husband murdered – but not until after he had been beaten and forced to witness her being brutally raped by many men. She was genitally mutilated and bitten so that, if she escaped, no other man would want her because she was ‘marked.’

Tears streamed down my face, not Asunta’s. Her eyes met mine with blankness. She didn’t look through me; but, although she held my eyes, there was no ‘connect’ with me – or her story.

One of the questions I always ask is, “Do you have a faith or belief?” When I asked this of Asunta, she simply said, “Christian. Muslim. What does it matter? There has never been a God for me.”

We allowed Asunta to stay on our compound and enter our Women’s Ministry. Her children entered our school. After a couple of weeks, her former ‘master’ tracked her down. He came to our compound demanding that we give him his ‘property.’ The children she bore while being his sex-slave were his ‘property,’ too.

“... Jesus is my husband and He is father to my children. Who could be better than that...”

Asunta stayed with us. About a month later, I was shocked when she showed up for our women’s Bible study. Later that same week she asked to be baptized with others from the community. Thoughtfully, in reverence, many came to declare a new found love in Christ as they were placed under the waters of the Nyamlel river. Pictured here, Asunta and I walk side by side in love, after the baptism ceremony. We sang with a great host of witnesses, “I have decided to follow Jesus”, as we marched back from the river to the orphanage compound. A new Asunta began to emerge.

After two years of daily food, love, work, and discipleship with Asunta, she shocked me once again. Standing in the midst of hundreds of women in worship, Asunta raised her hands yelling to both God and all who would hear, “We widows are the blessed ones because Jesus is my husband and He is father to my children. Who could be better than that?”

Asunta has remained a faithful and essential leader for Make Way Partners for 12 years.

*~ Kimberly Smith Highland
President, Make Way Partners*

Previous IPCF Grants

- Paid for boy’s dormitory
- Provided funding for a high school where enrollment continues to increase
- Funded a science lab





Addiction Prevention Coalition

- Code Red Chapters fighting heroin and opioid crisis
- Chapters help students build character, teach compassion, and educate about the harmful effects of alcohol, tobacco and other drugs
- Chapters currently in 19 Birmingham metro high schools and one middle school
- Two \$2,500 scholarships to graduating seniors who show leadership and character development



Addiction Prevention Coalition

The Addiction Prevention Coalition would like to thank the members of Independent Presbyterian Church for your generous support that allows us to provide critical drug prevention programs throughout the greater Birmingham area through our Code Red Chapters. We are bringing students from both sides of the mountain together in hopes to end the substance abuse epidemic plaguing our country.

More specifically, your dollars are enabling us to provide chartered transportation and food for events such as: Service Days, End Heroin Birmingham Walk, and our overnight Youth Retreat Leadership Training. Through these activities, the students are building character, developing compassion and seeing first hand, the harmful effects of alcohol, tobacco and other drugs.

We hope you are encouraged seeing these pictures of your investment – our future leaders of Birmingham.

~ Vivian Lokey Tucker

Development Director, Addiction Prevention Coalition

Breakthrough Birmingham

With the dual mission of closing the achievement gap and developing the next generation of educational leaders, Breakthrough Birmingham is proud to have celebrated five years serving students in Birmingham City Schools in partnership with the IPC Foundation and SAIL. In Summer 2017, 117 rising 7th, 8th, and 9th grade students participated in the six-week accelerated summer learning program and 24 undergraduates recruited nationally completed the nine-week teaching residency. Four exceptional professional educators with a combined 62 years of experience served as instructional coaches, coaching, and mentoring the teaching fellows.

As in any classroom, the teaching staff are central to the success of the students. Funding from IPC Foundation and SAIL supported compensation, training, and professional development for Teaching Fellows and Instructional Coaches. Funding also allowed Breakthrough to offer daily transportation and free supplies and materials – a critical offering that makes the Breakthrough program accessible to students in greatest need in our community.

Scholars participated in six weeks of rigorous instruction in math, science, and literacy; activities to develop non-cognitive skills, study skills, and leadership; and college and career exploration. With hard work and the support of incredibly talented instructional team, Breakthrough Scholars gained on average 2 months of reading skills and 5.7 months of math skills last summer.

Scholars explored new interests through electives, including visual arts, storytelling, and chess. Through a new initiative, seventh-grade students participated in competitive academic debate, developing research, writing, public speaking, and critical thinking skills as they passionately debated whether or not schools should require students to wear uniforms.

Eighth-grade Scholars visited The University of Alabama and ninth grade Scholars traveled to Atlanta to visit Georgia State University and Emory University. Seventh grade Scholars participated in virtual college scavenger hunts and Q&A with current college students.

On Career Day, Scholars were partnered with professionals to learn about various fields including financial planning, banking, medicine, law, counseling and human services, engineering, and local government. One group visited the City of Birmingham's City Council Office, whose staff were very impressed by the students: "They learned a lot, asked so many sophisticated questions to Councilors Scales and Austin, and even gave campaign speeches to become the next City Council president. We were blown away by the insight, intelligence, and genuine curiosity about local civics and government."

Since launching in 2013, Breakthrough Birmingham has served 255 students and has trained 97 undergraduates. Through their commitment to the program, Scholars return to their school-year classrooms with skills that make them role models and raise the level of achievement for their peers. Breakthrough students enroll in four-year colleges at three times the rate of their under-resourced peers across the country. In the words of one parent: "My son has told me on 3 different occasions that he has found himself using a Breakthrough tool – taking notes when it wasn't required, organizing a notebook, and mapping out a study plan. Breakthrough, I think we've got a breakthrough!"

*~Linn Grof
Executive Director, Breakthrough Birmingham*

Breakthrough Birmingham

- **Partnership with Birmingham City Schools and UAB**
- **Increases academic opportunity for unserved students**
- **Provides teacher development**
- **Part of a network of 24 Breakthrough affiliates in the US and one in Hong Kong**





*... empowering
women to make a
difference...*

- Only 29% of girls in Pakistan complete 10th grade
- Lack of clean running water and female restrooms often prevent girls from attending school
- Female enrollment at Forman Christian College is increasing annually
- 38% of students are female. Goal to reach 50/50 male/female enrollment by 2023
- 384-bed women's dormitory built in 2014
- IPCF Grant currently supporting 13 students on scholarship
- Within six-months of graduating, many graduates have jobs

Friends of Forman Christian College

Founded in 1864 by a Presbyterian missionary from Kentucky, Rev. Charles Forman, **Forman Christian College** was one of the first universities in India to admit women and has been a pioneer in interfaith harmony. Educating Muslims and Christians together, students apply from all over Pakistan to study at this prestigious school that has educated previous Prime Ministers of India and Presidents of Pakistan including Pervez Musharraf. In a country where less than 2% of the population are Christians, Forman boasts of a population of 7,300 students where the student body is 11% Christian and 40% of our university students are women. The Christians of Pakistan are from the poorest rungs of society and 82% of the Christian students require some form of scholarship to attend this 4-year baccalaureate liberal arts college.

The support of the Independent Presbyterian Church Foundation has helped Friends of Forman grant scholarships to promising young women, empowering those women to make a difference in their communities, churches and future children's lives. You are providing resources that will shape their faith and strengthen their witness for Christ in Pakistan today. Thank you for your partnership with this historic school that continues to shape hearts and minds through the school's motto from Galatians, "by love, serve one another."

~ Rev. Samuel A. Schreiner III

Executive Director, Friends of Forman Christian College



Kirkwood by the River

One of my favorite scripture passages is Psalm 92:12-14 which declares these wonderful words: “The righteous will flourish like a palm tree and grow like a cedar of Lebanon. . . . They flourish in the courts of our God. Even in old age they still bear fruit. They will stay green and full of sap!”

Part of my job as Chaplain at **Kirkwood by the River** is to help our residents experience that “flourishing” as they live at Kirkwood and to help us do that every week we have Worship Services, Bible Studies and other opportunities for spiritual reflection and fellowship in all the levels of care at Kirkwood. One of our residents told me just the other day before Chapel, “This is my favorite part of the week!” In Skilled Nursing, it is so heartening to see residents who normally say very little or show much sign of responsiveness move their lips in saying “The Lord’s Prayer” or join their voices in singing some of the wonderful hymns of our faith together. In the last several years we have also been contributing to the Food Pantry Ministry at IPC along with other opportunities for service and outreach. Indeed, we want our residents to “stay green and full of sap!”

“... the righteous will flourish... even in old age they still bear fruit...”

But here’s another one of my favorite quotes: “If we come into this world knowing that we are loved and go out of this world knowing that we are loved, we can handle everything in between.” At the heart of my role as Chaplain is to help our residents experience that love and to help them to know that they are always in God’s care.

It has indeed been a rich privilege for me to have served as Chaplain at Kirkwood for these last 14 years and I am deeply grateful to the IPC Foundation for supporting this important ministry at Kirkwood by the River.

*~ Rev. Richard Hanna
Chaplain, Kirkwood by the River*



Kirkwood Chaplain

- Ministers to residents and their families in this assisted living facility
- Leads worship on Thursdays in chapel and Fridays in skilled care unit
- Leads weekly Bible study





Muhabura Dorm

We are ever grateful to the Lord and to you. It is beautiful! The building will house 300 students and with 12 classrooms, a conference room and three offices. Thank you Birmingham Friends! We are still doing some finishing work.

~ Dr. Luarent Mbanda
Archbishop of Rwanda

Muhabura Project

- Increases on-campus living from 134 to 326 students
- Provides 12 hostel-style living spaces
- Creates 20 classrooms
- Helps fund scholarships for 35 students

The IPC Foundation made a multi-year commitment to Muhabura Integrated Polytechnic College in Musanze, Rwanda to help construct this dorm with the goal of increasing boarding students from the current 134 to 300. Part of the grant includes money for a privately managed endowment fund to provide scholarships for 35 orphaned and vulnerable children from impoverished families.

The university is run by the EAR Shyira Diocese and strives to provide students with an education and skilled job training. Its vision is “to Create a new generation of well educated Christian Entrepreneurial Technicians and leaders in Rwanda and beyond.” Areas of study include hospitality/tourism, engineering and technical training for jobs in computer engineering, electrical engineering, plumbing, masonry, carpentry, welding, food beverage service & sales, front officer operations and culinary arts. Classes are offered during the day, evenings and weekends.

In 2016, there were 337 high school students and 573 students at the Advance Diploma level enrolled at the college. Another 200 students were expected to begin before the end of the year. The IPC Foundation Grant will allow the college to provide space and housing for these students.



Spring Valley School

Spring Valley School is the only school in central Alabama providing a specialized education for students in grades 2-12 with specific learning disabilities, such as dyslexia. Students with learning disabilities may have problems with reading, writing, mathematics, and/or organizational skills. Learning disabilities should not be confused with conditions such as intellectual disability or behavioral disorders. One thing that sets SVS apart from other private schools is its unique niche in the community. Spring Valley is a haven for students whose educational needs have not been met in a public school environment. Multisensory teaching strategies and specially designed curriculum are utilized in a small classroom setting. For instance, in reading intervention, students participate daily in systematic and cumulative instruction, which ultimately helps each student to become a life long learner. When students learn to read and enjoy a variety of books, vocabulary and reading comprehension vastly improve.

Many of today's well known business leaders and entrepreneurs have dyslexia, including Richard Branson and Charles Schwab. As one SVS parent states, "SVS students would never be called Tomorrow's Entrepreneurs in a public school. SVS helps students unlock their hidden potential." Another parent with a student entrepreneur states, "I truly believe without Spring Valley the little boy would have lost his confidence, and love of learning, if not rejuvenated and supported by the learning environment of Spring Valley."

With the generous support of the Independent Presbyterian Church Foundation, Spring Valley School continues to provide this unique education to low and moderate income students.

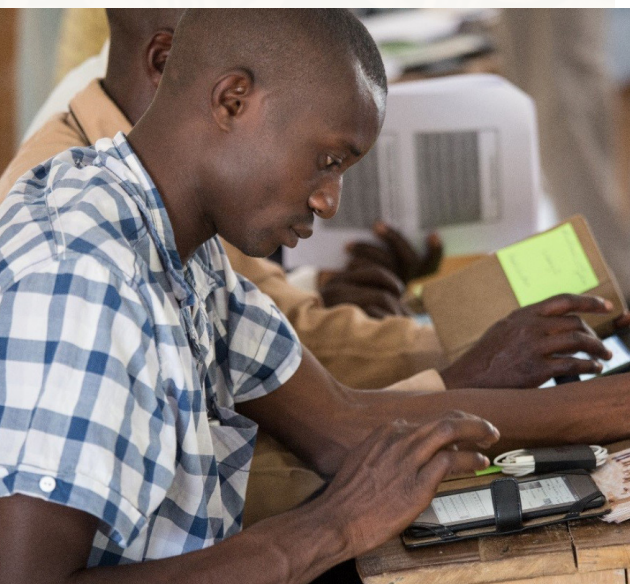
*~ Dr. Laura Fiveash
Executive Director, Spring Valley School*



Spring Valley School

- Serves students with learning differences such as Dyslexia, Dysgraphia, Dyscalculia and AD/HD
- Accredited through Southern Association of Colleges and Schools
- Students contribute to the community through leadership and community service





Theological Education Project

Joseph Weah survived 14-years of civil war. Today, he studies at a seminary in Liberia still suffering from damaged buildings, a library of outdated texts, no internet access, and intermittent electricity. Yet, he is excited to answer God's call to serve others.

For the first time in his life, Joseph has a complete Bible. Last October, he received an e-reader loaded with, as he calls it, "a library on the go." For the first time, teachers do not have to make a class of twenty students share one outdated text book.

Education is transformational. Schools of theology, in conflict or post-conflict settings, do not have access to traditional books, computers or libraries. It is rare to find current theological material written in native languages or cultural context.

In partnership with other denominations, episcopal areas, and schools of theology, the **E-reader Project** is providing digital books to faculty and students so they have the resources necessary to make disciples for Jesus Christ for the transformation of the world.

So far, 22 colleges and universities in Africa, four in The Philippines, six Latin American schools, one university in Mongolia, and one seminary in Vietnam are using e-reader libraries.

The E-reader Project filled an unanticipated, but vital role in West Africa as Ebola killed 11,000 people. With help from the IPCF and others, the E-reader Project distributed 35,000 copies of a new Ebola prevention resource to help lay and clergy leaders teach their congregations and host communities how to deal with the disease.

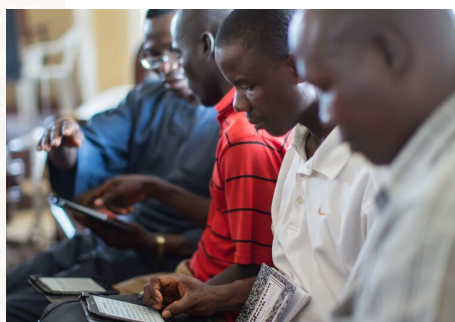
Additionally, Ebola: A Poem for the Living, an animated video, was created as a free download in 17 languages. It directly reached 60,000 people in northern districts of Sierra Leone in the first three months of its release. IPC has helped lead the way. Together, every day, we provide HOPE.

~ M. Scott Gilpin

Interim Executive Director, Tanzania Wesley College Foundation

Theological Education Project

- 2,429 e-readers with downloaded theological libraries distributed since 2014
- Libraries available in French, English, and Portuguese
- E-reader-equipped seminarians and faculty serve congregations, impacting more than 364,000 church members and host communities
- \$39,000 contributed by IPCF since 2014 (\$5,000 in 2017)
- All IPCF's grants doubled through the Central Conference Theological Education Fund of the United Methodist Church. Every penny used for e-reader purchases; no funds spent on administration
- Recipient seminarians gave \$5 to \$30 each term toward the cost of their e-readers



The Utilized Funds

The budget of the **Music and Fine Arts Department of IPC** is partially funded annually through monies from funds invested in the IPC Foundation. The Myrtle Jones Steele Memorial Fund helps to sponsor the November Organ Recital Series each year. Four world-renown organists are presented to Birmingham as a gift to the community, displaying their artistic skills on what has become known as one of the premiere organs of the world built by the Dobson Pipe Organ Company of Lake City, Iowa. The artists in 2017 were:

- Thomas Murray - long-time professor of organ at Yale University
- Dexter Kennedy - winner of the international organ competition at Chartres Cathedral and professor of organ at Wooster College
- Jens Korndörfer - Director of Music at First Presbyterian Church Atlanta and international artist
- Jonathan Ryan - Organist-Choirmaster at St. Michael and All Angels Dallas and international artist.

The Religious Arts Festival Fund gives support to the Religious Arts Festival held annually in February, bringing artists, speakers and musicians to Birmingham for a week of arts events. These events appeal to different interests and attract many visitors to our church. In 2017, the Festival opened with Matthew Bees leading a workshop in flower arranging for our Flower Guild and guests titled “Flowers to the Glory of God. Celebrating the Art of Floral Designs in Worship Settings.” Andrea Dismukes from Chattanooga led our children and others from visiting churches in an “Evensong for Young Servants.” Dr. Edwin Chr. Van Driel who was on the committee that designed the new Presbyterian hymnal lectured on “Glory to God – The Making of a Hymnal.” Dr. William J. Carl, III presented a lecture on “History of Worship as seen through Art and Architecture.” The annual Festival Banquet featured musicians from the Alabama Symphony who performed and spoke of their process of moving to Birmingham. The Festival ended with a concert of music from the 14th-16th Centuries performed on period instruments by the Baltimore Consort.

*~ Dr. Jeff McLelland
Director, Music & Fine Arts*



2017 Board of Directors

Susie Abbott, President

Beth Adams

Susan Clayton

William J. Carl, III

Lydia Cheney

Houston Cook, Vice President

Bryson Edmonds

Mike Graham

Marsha Harbin, Foundation Support

Penney Hartline

Denise W. Moore, Executive Director

Ruffner Page

Foots Parnell

Pat Pelham

Donna Smith

Fred Smith

David Turner, Secretary/Treasurer

Lucy Turner, Director of Development

Lyda White

2018 New Members

Jamie Gregory

John Johnson

Jean Shanks

Melanie Talbot

IPC Foundation

2017

Annual President's Report

Our Purpose

The purpose of the Foundation is to extend IPC's ministries through the use of endowments.

The Year in Review

The **Grantmaking Committee** oversees distribution of funds, including the Beeson Fund and the 35 Unitized Funds. In 2017, the committee, chaired by Mike Graham:

- Conducted the annual IPC Foundation grants cycle. Reviewed 92 applications (18 from new applicants) and awarded 82 grants for \$1.7 million, 56% of the amount requested. The grants were distributed in early February 2018.
- Continued funding the SAIL (Summer Adventures in Learning) program for \$147,000. IPCF is 1 of 11 funders across the Birmingham Area with combined awards totaling \$956,500.
- Managed the Youth Grant team charged with researching and recommending distributions totaling \$15,000.
- Reviewed 40 requests for small grants and approved 32 totaling \$137,000, 63% of the requested amount.
- Approved 1 emergency grant for \$10,000 to assist with the widespread devastation affecting Puerto Rico from Hurricane Maria.
- Approved distributions from 28 Unitized Funds totaling \$444,275, benefiting almost every IPC Ministry Team (particularly the Children's Fresh Air Farm), STAIR, and Kirkwood by the River.

The **Finance Committee** actively oversees financial matters, with its major focus being the investment of Foundation endowments. In 2017, the committee, chaired by David Turner:

- Met quarterly with the Foundation's investment advisors and reviewed investment performance compared to benchmark,

monitored asset allocation, reviewed manager performance and fees, and discussed industry outlook.

- Reviewed and set spending policy for 2018.
- Received the annual financial audit, which had no findings.

The **Development Committee** oversees efforts to publicize the Foundation and grow the endowments. In 2017, the committee, chaired by Foots Parnell:

- Promoted the Henry M Edmonds Society (HME Society) through informational meetings, bulletins, and various online messages.
- Hosted Foundation Sunday in January and invited the Youth Grants Team to present.
- Published the 2016 Annual Report.
- Placed several Foundation related articles in *The Window*.
- Worked with Rev. Lucy Turner, Director of Stewardship and Development, to bring in \$141,000 of gifts to the Foundation.

The **Governance Committee** handles matters which span multiple committees. In 2017, the committee chaired by Susie Abbott:

- Nominated 2018 officers and proposed new directors to replace those whose terms end in 2018.

Susie Abbott, 2017 President
The Independent Presbyterian Church Foundation



The Independent Presbyterian Church Foundation encourages and receives contributions for the endowment of the Independent Presbyterian Church, invests its funds to accomplish the donor's intentions, and seeks innovative and responsive ways in which its assets may serve Christ's church, the community and the world.

— IPC Foundation Mission Statement



Overview of the Foundation

The Independent Presbyterian Church (IPC) Foundation is a 501 (c) (3) corporation formed in 1973 in Birmingham, Alabama. The purpose of the Foundation is to extend IPC's ministries through the use of endowments.

A History of Major Giving & Fund Creation

The early years of IPC were devoted to building and beautifying the church and the Children's Fresh Air Farm. This work absorbed all available funds, as well as requiring a mortgage of \$150,000. When the Depression came, repayment had to be deferred. This phase of our history ended in 1943; a pledge of \$50,000 by Robert I. Ingalls generated a swell of enthusiasm; a congregational dinner was held to secure the additional pledges needed to retire the debt. The instruments of indebtedness were burned at the annual congregational dinner on January 19, 1944.

First Fund

IPC's first endowment began when Robert R. Meyer made a matching grant in 1943. The Meyer Fund still supports the Children's Fresh Air Farm.

From its early days, the Children's Fresh Air Farm attracted support from within IPC and from the community at large. The primary benefactor was Robert R. Meyer, not an IPC member but a friend of Henry Edmonds. Mr. Meyer underwrote much of the Farm's annual operating expenses and purchased the property for the Farm. Later he made two gifts to provide permanent support. First, he pledged \$50,000 in 1943, subject to IPC's contribution of an additional \$25,000. Then, through his will in 1947, he gave \$75,000, subject to IPC's contribution of another \$25,000. This sum of \$175,000 formed the initial balance of the **Robert R. Meyer Children's Fresh Air Farm Fund**.

IPC's second endowment came in 1961, when the **C. Eugene Ireland Fund** was established to hold bequests of C. Eugene and Annette Ireland, which totaled \$883,000. The Irelands suggested several causes to be supported by the Fund, but left responsibility for this decision with IPC.

Between 1982 and 1984, IPC received the seed gifts that became the **Orlean and Ralph W. Beeson Fund**. The Beesons gave \$540,000 during their lifetimes, and added bequests that brought total contributions to \$18.6 Million. The Beeson Fund is devoted to "the benefit of mankind, the education of youth, the relief of human suffering, and propagation of the Christian religion." In 2001, the Trust was reformed to allow the Trustee to allocate some portion of principal growth each year to income thereby calculating distributions based on a "total return" approach. Due to inconsistencies in the Testamentary Documents as reformed in 2001, the administrative provisions of the Trust were restated in 2014 into a single document to provide a clear and concise statement of donor's binding intent.

The **Children's Fresh Air Farm Capital, Program, Maintenance, and Development Fund** was established in 1987 by an anonymous donor with an initial gift of \$500,000. Additional donations from the donor's family totaling \$6,387,118 have since been received. The Children's Fresh Air Farm is the primary beneficiary, but the Fund also provides support to IPC.

By 2002, the number of funds had grown, several of them having similar purpose and smaller balances. Seven of these funds were consolidated for efficiency. At that time, the threshold for a fund was set at the current level of \$25,000. Since that time, 19 additional funds have been created. See page 17 for a complete list of unitized funds.





The Henry M. Edmonds Society

The Henry M. Edmonds Society (HME Society) recognizes those who have named the Independent Presbyterian Church Foundation as a beneficiary of a planned gift. Named in memory of Dr. Henry M. Edmonds, the founding pastor who led the church from 1915-1942, the Society encourages gifts to the Foundation that support the mission and ministries of the church. Anyone who informs the Foundation in writing that the Foundation is included in his/her estate plan will be a member of the HME Society. As of April 2, 2018, the HME Society has a total of 88 members.

Funds Overview

During 2017, grants were awarded and distributions made totaling \$2.3 million from Foundation endowments. Below is a summary of the major funds.

The Orlean and Ralph W. Beeson Fund

The Orlean and Ralph W. Beeson Trust is devoted to the “benefit of mankind, the education of youth, the relief of human suffering, and propagation of the Christian religion.” While the Beeson Fund is closed to contributions, the Yarbboro Fund is open to new contributions. The combined income is used in the grants process described below. At the end of 2017, the Beeson Fund’s assets totaled \$49.4 Million.

IPCF Grant Processes

The primary grants process, known as the **IPCF Annual Grants**, is carried out jointly by the Grantmaking Committee of the Foundation and the Grants Subcommittee of IPC’s Community Ministries Committee. Grant applications are evaluated in the summer and fall, and site visits are made where feasible. Grants are approved at the November meeting of the Board and distributions are made the following February.

IPCF Scholarship Grants provide financial aid to students at Protestant Christian theological seminaries and small Protestant colleges and universities. Applications from school admission directors for needs-based financial aid are accepted at any time; responses are given within 30 days. The Foundation maintains a reserve for **IPCF Emergency Grants** to respond to needs too urgent to await the Annual Grants cycle.

2017 IPCF Grant Awards

- Totaled \$1,854,898 (see Appendix A)
- Awarded 56% of the amount requested.

Finally, the Foundation recognizes that smaller needs do not justify the effort of a formal grant application. Accordingly, **IPCF Small Grants** are awarded monthly in a streamlined manner.

2017 IPCF Grants Summary

IPCF grants provide support to people in the United States, Central and South America, Africa, Europe, and Asia. Each grant has a story attached: feeding the hungry, educating the needy, healing the sick, caring for widows and orphans, lifting the oppressed, and spreading the Good News to a troubled world.

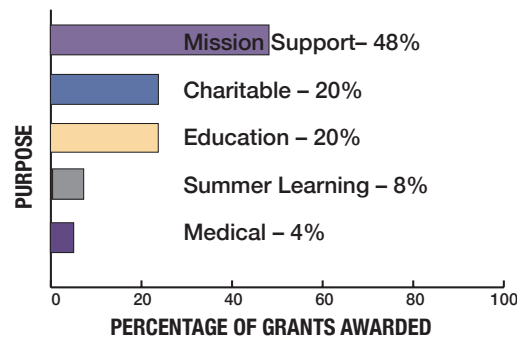
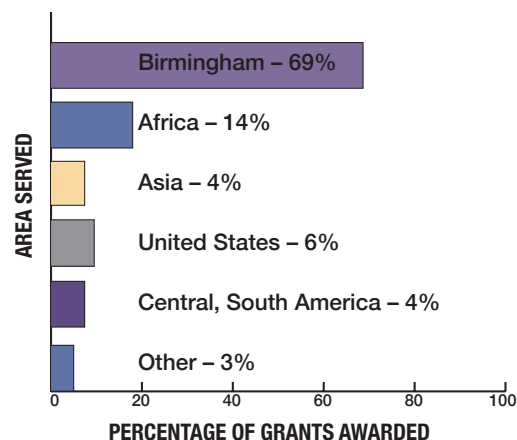
Income is distributed in accordance with the 2014 Restated Trust across the following categories: Scholarship Aid to Protestant Christian Theological Seminaries and Small Colleges or Universities associated with the Protestant Christian Faith, organizations providing medical care and services to the indigent, agencies and organizations for general charitable purposes, and a limited portion to miscellaneous charitable organizations or entities, including IPC.

The Unitized Funds

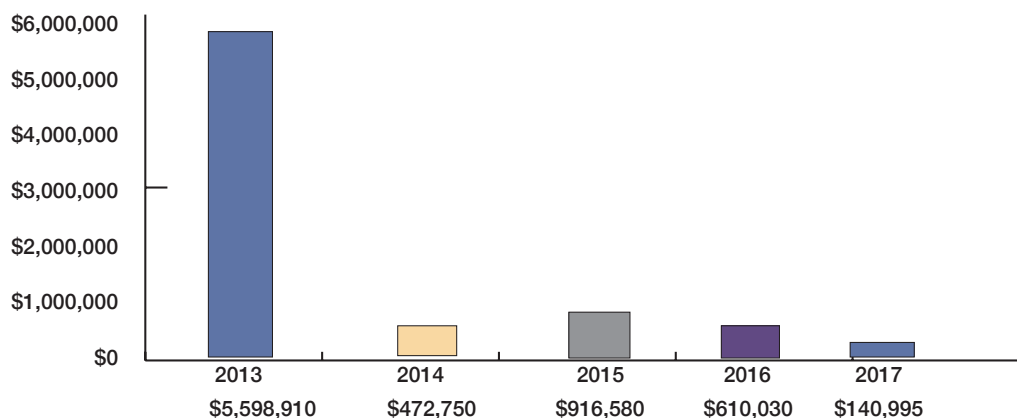
The Unitized Funds comprise 34 separate funds with net assets of \$18,044,995 at December 31, 2017. Earnings from the funds support programs at IPC, Kirkwood by the River, STAIR, and other programs based upon donor guidance. Combined distributions in 2017 were \$444,275.

As shown below, contributions remain strong totaling ~ \$7.7 million over the past five years.

2017 IPCF GRANTS SUMMARY



ANNUAL CONTRIBUTIONS TO IPC ENDOWMENTS



Fund-by-Fund Contributions, Distributions and Fund Balance for year ending 12/31/2017				
	Year			Market
	Formed	Contributions	Distributions	Value
<u>The Unrestricted Funds</u>				
Covenant Fund	1982	\$4,181	\$35,160	\$1,781,184
M. Scott McClure Fund	1997	\$25,000	\$620	\$52,930
<u>The Community Ministries Funds</u>				
Robert R. Meyer CFAF Fund	1943	\$0	\$54,550	\$2,002,213
CFAF Campship Fund	1949	\$0	\$23,420	\$850,024
CFAF Capital Development Fund	1987	\$0	\$202,620	\$8,212,132
C. Eugene Ireland Fund	1961	\$0	\$39,270	\$1,448,417
Children's Fresh Air Farm General Fund	2002	\$0	\$3,740	\$137,066
Yarboro Community Ministries Fund	2006	\$7,256	\$27,800	\$1,344,073
Lydia C Cheney Fund	2011	\$3,000	\$2,920	\$110,046
Sue Aldridge Newton Fund	2012	\$0	\$1,740	\$63,645
Children's Christian Education Fund	2012	\$0	\$3,010	\$110,540
Dave and Jo Self Fund	2016	\$0	\$0	\$174,889
<u>The Music & Fine Arts Funds</u>				
Steele Memorial Fund	1982	\$900	\$2,830	\$104,731
Caroline Nissly Stayer Choral Music Fund	1984	\$1,100	\$220	\$9,321
Joseph and Betty Schreiber Performance Fund	1998	\$25,600	\$0	\$57,233
Religious Arts Festival Fund	2000	\$0	\$2,840	\$104,123
<u>The Christian Education Funds</u>				
Nabers Christian Education Fund	1984	\$0	\$870	\$31,986
Margaret M. McClure Library Fund	1995	\$0	\$1,210	\$54,005
Paul Romjue Focus on Faith Fund	2000	\$3,050	\$2,370	\$90,473
Barbara Noojin Walthall Bible Study Fund	2003	\$0	\$3,200	\$117,319
Jeanne Isaacs Children's Ministries Fund	2005	\$0	\$1,750	\$64,208
Bessie Herron Lester Fund	2007	\$1,000	\$2,340	\$88,001
HERO Fund	2008	\$15,525	\$5,150	\$160,321
Alyson L. Butts Fund	2009	\$0	\$970	\$35,607
Clinton Williams Taylor Fund	2011	\$7,500	\$2,790	\$114,604
William W. Featheringill Technology Fund	2013	\$0	\$0	\$31,851
Jere White Children's Ministry Fund	2014	\$0	\$6,000	\$24,957
The Gerald J Pulliam Fund	2015	\$0	\$11,385	\$13,736
IPC Day School Endowment Fund	2015	\$2,040	\$0	\$66,455
<u>The Pastoral Care Funds</u>				
Pastoral Care & Counseling Fund	1985	\$0	\$1,410	\$51,757
Garnet Deramus Congregational Care Fund	2006	\$9,293	\$2,270	\$92,546
<u>The Facilities Funds</u>				
Katherine A. "Libby" Kidd Facilities Fund	2008	\$10,050	\$0	\$214,065
<u>Other Funds</u>				
IPC Educational Scholarship Fund	1967	\$0	\$0	\$31,291
Martha Steger Estes Fund	2004	\$0	\$1,820	\$66,690
Fund Pending Approval		\$25,500	\$0	\$25,500
Total Untized Funds		\$140,995	\$444,275	\$17,937,940

The Life Income Fund

The Life Income Fund is a "pooled income fund" as defined in Section 642 (c) (5) of the Internal Revenue Code. The Fund is established to hold gifts whose income is provided to one or more beneficiaries during their lifetime, and whose principal (known as the remainder interest) passes to IPC and/or related organizations thereafter. As of December 31, 2017, the asset balance was \$0.

Funds Administered for Others

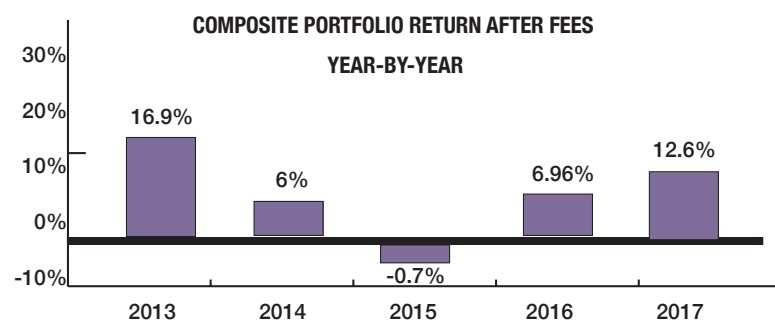
The Foundation administers funds on behalf of Boy Scout Troop 28. The Troop 28 Fund was established in 2008 by a gift of land from an anonymous donor. The Fund will support the mission and activities of Troop 28, which is chartered by the Boy Scouts of America with the Independent Presbyterian Church as the chartered organization. The Fund is open to receiving additional contributions and has net assets of \$366,105 at December 31, 2017.

The Administrative Fund

The Foundation maintains an Administrative Fund for the purpose of paying grants and distributions from the endowments as well as the administrative expenses of the Foundation. As of December 31, 2017, the asset balance in the Fund was \$235,970.

Investment Performance and Fees

The Foundation has a long-term investment horizon and maintains equity-market exposure through good and bad times, but strives to limit the impact of downturns. On balance, this approach has served us well. As shown below, the Foundation benefits from several years of positive returns. The investment return of 12.6% in 2017 exceeded the blended benchmark return of 12.3%.



The Power of Endowments

Endowments are truly gifts that keep on giving, as donations small and large combine to create permanent support. To illustrate, consider the Beeson Fund. The bequests that comprise the bulk of the endowment were received in 1988 and 1990. Since then, for each \$1.00 received:

- \$1.99 has been withdrawn to support the ministries specified by the Beesons
- \$2.63 remains in the Fund to generate income for future support of those ministries.



Administrative Costs

- 0.42% in 2013
- 0.43% in 2014
- 0.42% in 2015
- 0.41% in 2016
- 0.41% in 2017

Investment Fees

The IPC Foundation fees of .017% of assets are well below the average median for a foundation our size. For foundations of similar size, the fees are typically .50% of assets.

Independent Auditor's Report

The annual independent audit for 2017 should be complete by the end of August 2018, and the report will be posted to the website. The 2016 audit report provided by RSM LLP is available to view on the Foundation website.

Appendix A: 2017 IPCF Grant Awards

Charitable	\$375,590	Teach for America - Alabama	\$45,000
Addiction Prevention Coalition	\$5,000	Tusculum College	\$4,000
Alabama Sheriffs Youth Ranches, Inc.	\$5,440	Union Presbyterian Seminary	\$4,000
Alabama Symphony Orchestra	\$1,400	United Way of Central Alabama	\$16,500
Alzheimers of Central Alabama	\$4,800	University of Alabama	\$3,000
AMBUCS - Birmingham Chapter	\$3,200	Medical Services to the Needy	\$66,500
Angel Flight	\$2,200	Addiction Prevention Coalition	\$10,000
Assistance League of Birmingham	\$5,000	Angel Flight	\$5,000
Birmingham Botanical Society	\$5,000	Cahaba Valley Health Care	\$7,500
Birmingham Boys Choir	\$5,000	Children's of Alabama	\$6,000
Brother Bryan Mission	\$10,000	Glenwood	\$5,000
Camp Fire	\$2,000	IPC - Congregational Ministries	\$10,000
Children's Aid Society	\$3,750	Kid One Transport	\$8,000
Community Furniture Bank	\$42,500	Oasis Counseling	\$5,000
Community Kitchens of Birmingham	\$16,000	Smile-A-Mile	\$10,000
Desert Island Supply Company	\$5,000	Mission Support	\$891,230
Episcopal Place	\$7,500	Bread for the World	\$10,000
Exceptional Foundation	\$5,000	Chalmers Center at Covenant College	\$7,500
First Light	\$72,500	Church of the Risen Christ - Ukraine	\$5,198
Grace House	\$11,500	CURE International - Kabul	\$60,000
Greater Birmingham Ministries	\$10,000	First Presbyterian Church Tuscaloosa	\$10,000
Habitat for Humanity	\$15,000	Friends of Forman Christian College	\$10,000
Hand in Paw	\$5,000	His Kids, Too!	\$10,000
Hayes K-8	\$2,800	IPC - Community Ministries	\$181,600
HICA	\$15,000	IPC - Open Door	\$50,000
Impact Alabama	\$10,000	IPC - Social Services	\$14,720
IPC Congregational Ministries	\$7,500	Mission Leader	\$3,000
Jewish Community Center	\$5,000	Kirkwood by the River	\$108,972
King Home	\$2,500	Lifeline Children's Services	\$2,500
Kingston Garden	\$5,000	Living Water for the World	\$10,000
Oak Mountain Missions	\$2,000	Make Way Partners	\$120,000
Oasis Counseling for Women & Children	\$5,000	Marion Medical Mission	\$13,940
PARCA	\$5,000	Medical Benevolence Foundation	\$40,000
Presbyterian Home for Children	\$5,000	Medical Missions, Inc.	\$29,600
Red Mountain Theatre Company	\$5,000	Ministry of Hope - Lesotho	\$10,000
Shepherd's Fold	\$7,500	Mission:Hope	\$5,000
Society of St. Andrew	\$3,000	Mwandi UCZ Mission Hospital	\$20,000
South Highland Center	\$7,500	Mwandi UCZ OVC	\$15,000
Studio by the Tracks	\$5,000	Oak Mountain Missions Ministries	\$10,000
The Well House	\$5,000	Outreach Foundation	\$37,000
Woodlawn Foundation	\$10,000	PCUSA - EERN	\$4,700
Workshops, Inc.	\$7,500	Presbyterian Mission Agency	\$12,500
YouthServe	\$7,500	Presbyterian Church in the Congo	\$10,000
YWCA Central Alabama	\$10,000	Presbyterian Church USA	\$10,000
Education	\$374,578	Presbytery of Sheppards & Lapsley	\$50,000
ACE (AlaQuest Collaborative for Education)	\$3,000	Rwanda Diocese	\$20,000
Alabama Possible	\$10,000	Summer Adventures in Learning (SAIL)	\$147,000
Better Basics	\$7,500	Antioch Missionary Baptist Church	\$9,500
Birmingham Education Foundation	\$10,000	Bethel Baptist Church	\$4,000
Cahaba River Society	\$10,000	Better Basics	\$6,000
CAMP (College Admissions Made Possible)	\$5,000	Birmingham Education Foundation	\$14,000
Construction Education Foundation	\$12,500	Boys & Girls Club of Central Alabama	\$4,000
Cornerstone School	\$12,000	Breakthrough Birmingham	\$12,000
Faulkner University	\$4,000	Deaf Learning Program - CERO Foundation	\$5,000
Foundations Early Learning & Family Ctr	\$12,500	Entrepreneurial Ventures in Education	\$5,000
Girls, Inc.	\$10,000	Fresh Start Family Solutions	\$3,000
Growing Kings	\$12,500	Girls Inc.	\$2,000
Johnson C. Smith Theological Seminary	\$5,000	Grace House	\$3,000
Literacy Council	\$10,000	Homewood City Board of Education	\$500
Living River	\$50,000	IMPACT Family Counseling	\$3,000
Louisville Seminary	\$4,000	IPC Children's Fresh Air Farm	\$15,000
Maryville College	\$15,000	Neighborhood Academy	\$2,000
M-Power Ministries	\$12,500	Nichol Temple - DPCV Foundation	\$5,000
Payne Chapel AME Church	\$5,000	Restoration Academy	\$2,000
Pittsburgh Seminary	\$4,078	Urban Hope Development	\$7,000
PreSchool Partners	\$7,000	Urban Ministry, Inc.	\$5,000
Samford University	\$7,000	YMCA Alabaster	\$17,500
Spring Valley School	\$10,000	YMCA Birmingham Metro	\$12,000
St John AME Church	\$3,500	YWCA - Central Alabama	\$3,000
STAIR of Birmingham	\$60,000	Zion Springs Baptist Church Springboard	\$7,500
		Grand Total	\$1,854,898

Appendix B: Financial Information

FUND-BY-FUND BALANCE SHEET For The Year Ended December 31, 2017

	Administrative Fund	Beeson Fund	Unitized Funds	Troop 28 Fund	Total
ASSETS					
Cash and cash equivalents	\$125,970	\$473,456	\$510,010	\$0	\$1,109,436
Investments, at market	\$110,000	\$48,948,230	\$17,351,169	\$0	\$66,409,399
Accrued income	\$0	\$0	\$4,022	\$0	\$4,022
Land	\$0	\$0	\$0	\$387,000	\$387,000
Other receivables	\$0	\$0	\$164,881	\$0	\$164,881
Total Assets	\$235,970	\$49,421,686	\$18,030,082	\$387,000	\$68,074,738
LIABILITIES AND NET ASSETS					
LIABILITIES					
Funds due to/from other funds	\$1,564	\$0	(\$22,459)	\$20,895	\$0
Accrued expenses	\$11,704	\$1,687,795	\$7,546	\$0	\$1,707,045
Total Liabilities	\$13,268	\$1,687,795	(\$14,913)	\$20,895	\$1,707,045
NET ASSETS					
Unrestricted	\$222,702	\$0	\$3,638,264	\$0	\$3,860,966
Temporarily restricted	\$0	\$11,708,995	\$6,524,670	\$366,105	\$18,599,770
Permanently restricted	\$0	\$36,024,896	\$7,882,061	\$0	\$43,906,957
Total Net Assets	\$222,702	\$47,733,891	\$18,044,995	\$366,105	\$66,367,693
TOTAL LIABILITIES AND NET ASSETS	\$235,970	\$49,421,686	\$18,030,082	\$387,000	\$68,074,738

FUND-BY-FUND STATEMENT OF ACTIVITIES For The Year Ended December 31, 2017

	Administrative Fund	Beeson Fund	Unitized Funds	Troop 28 Fund	Total
REVENUES AND GAINS					
Interest and dividends	\$0	\$910,911	\$244,778	\$0	\$1,155,689
Contributions	\$5,000	\$0	\$140,995	\$0	\$145,995
Net unrealized and realized gains or losses	\$0	\$4,525,363	\$1,966,194	\$0	\$6,491,557
Returned grants and other income	\$40,801	\$0	\$0	\$0	\$40,801
Total revenues and gains	\$45,801	\$5,436,274	\$2,351,968	\$0	\$7,834,043
EXPENSES					
Investment management and trustee fees	\$0	\$57,256	\$52,020	\$0	\$109,276
Administrative expenses	\$273,610	\$0	\$0	\$373	\$273,983
Grants and other distributions	\$2,262,833	\$21,681	\$0	\$0	\$2,284,514
Transfer to another Foundation fund	(\$2,571,261)	\$2,076,950	\$494,311	\$0	\$0
Other distributions	\$39,691	\$0	\$0	\$0	\$39,691
Total Expenses	\$4,873	\$2,155,887	\$546,331	\$373	\$2,707,464
Change in Net Assets	\$40,928	\$3,280,387	\$1,805,637	(\$373)	\$5,126,579
Fund Balance (Beginning of Year)	\$181,774	\$44,453,504	\$16,239,358	\$366,478	\$61,241,114
Fund Balance (End of Year)	\$222,702	\$47,733,891	\$18,044,995	\$366,105	\$66,367,693



Shown: Theological Education Project, Spring Valley School, Breakthrough Birmingham, Addiction Prevention Coalition, Friends of Forman College



INDEPENDENT PRESBYTERIAN CHURCH FOUNDATION

For more information about the IPC Foundation, contact:

Denise W. Moore, IPC Foundation Executive Director at 205.933.3705 or dmoore@ipc-usa.org

Rev. Lucy Turner, Director of Stewardship & Development at 205.933.3729 or lturner@ipc-usa.org

Dr. William J. Carl III, IPC Senior Pastor at 205.933.3710 or wcarl@ipc-usa.org